



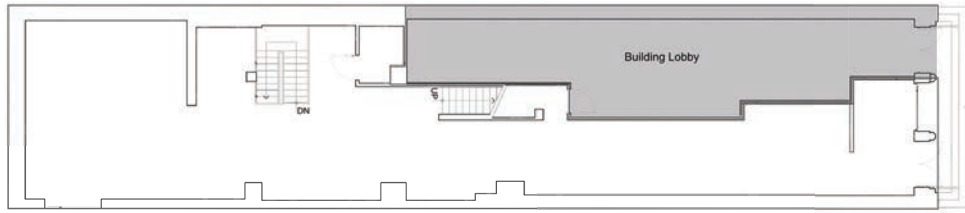
45

GREENE STREET

Between Broome & Grand Streets



Ground Level



Lower Level



DETAILS :

Ground Level: **2,112 SF** | Lower Level: **1,230 SF**

Ceiling Heights: **15' 6" (Ground)**, **9' 6" (Lower)**

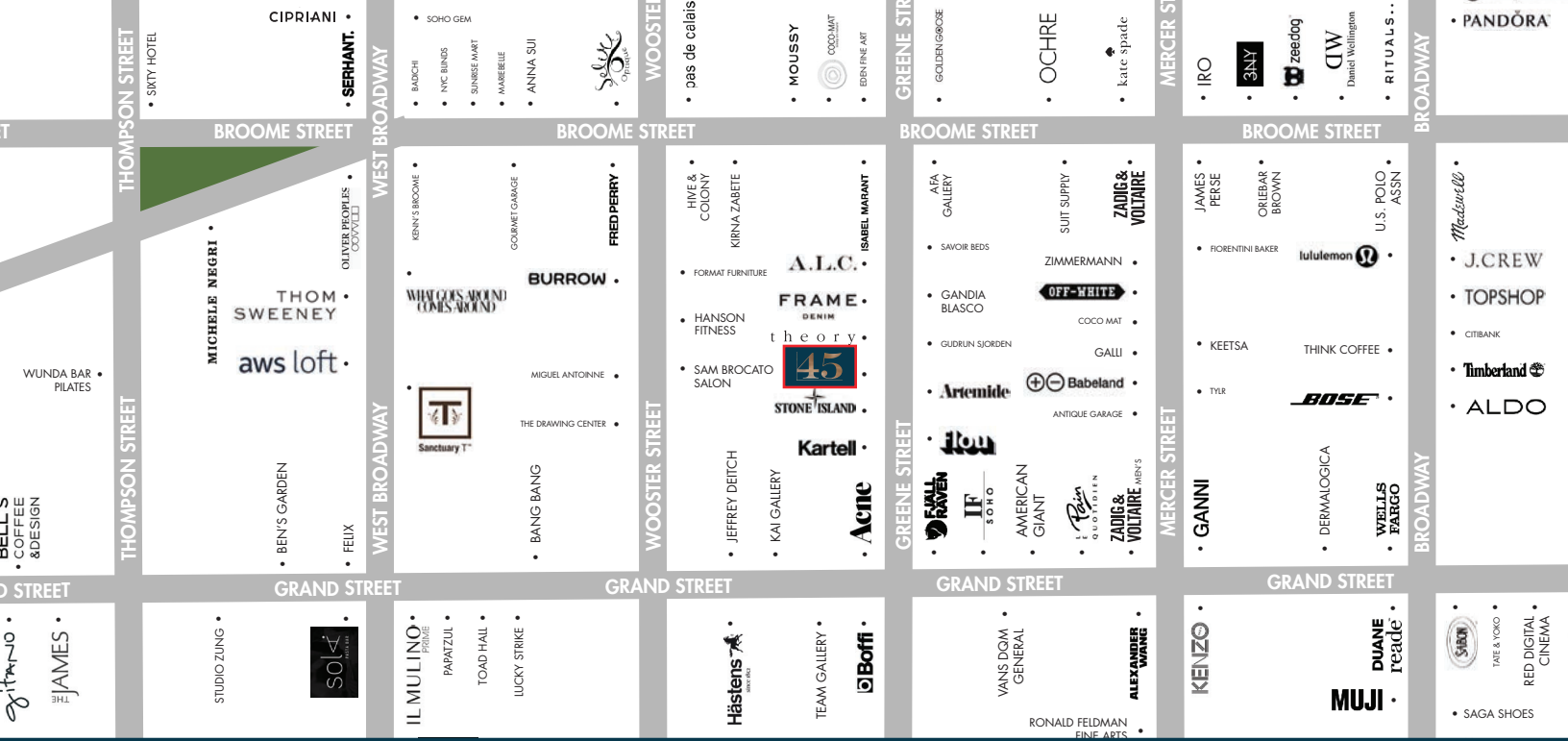
Term: **Negotiable** | Possession: **Immediate**

Asking Rent: **Please Inquire**



NEIGHBORS :

- Theory
- Stone Island
- Acne
- Frame Denim
- ALC
- Isabel Marant
- Fjallraven
- Artemide
- Flou



NOTES :

- Elegant and serene turnkey space
- Sun-drenched on both levels
- Ground level has a large window and skylight
- Lower level (Use Group 6) has a window and is perfect for showroom or office use with efficient stock room space

PLEASE CONTACT:

Christopher Owles

212.604.9002 | chris@sinvin.com

Sarah Shannon

646.673.8780 | sarah@sinvin.com

