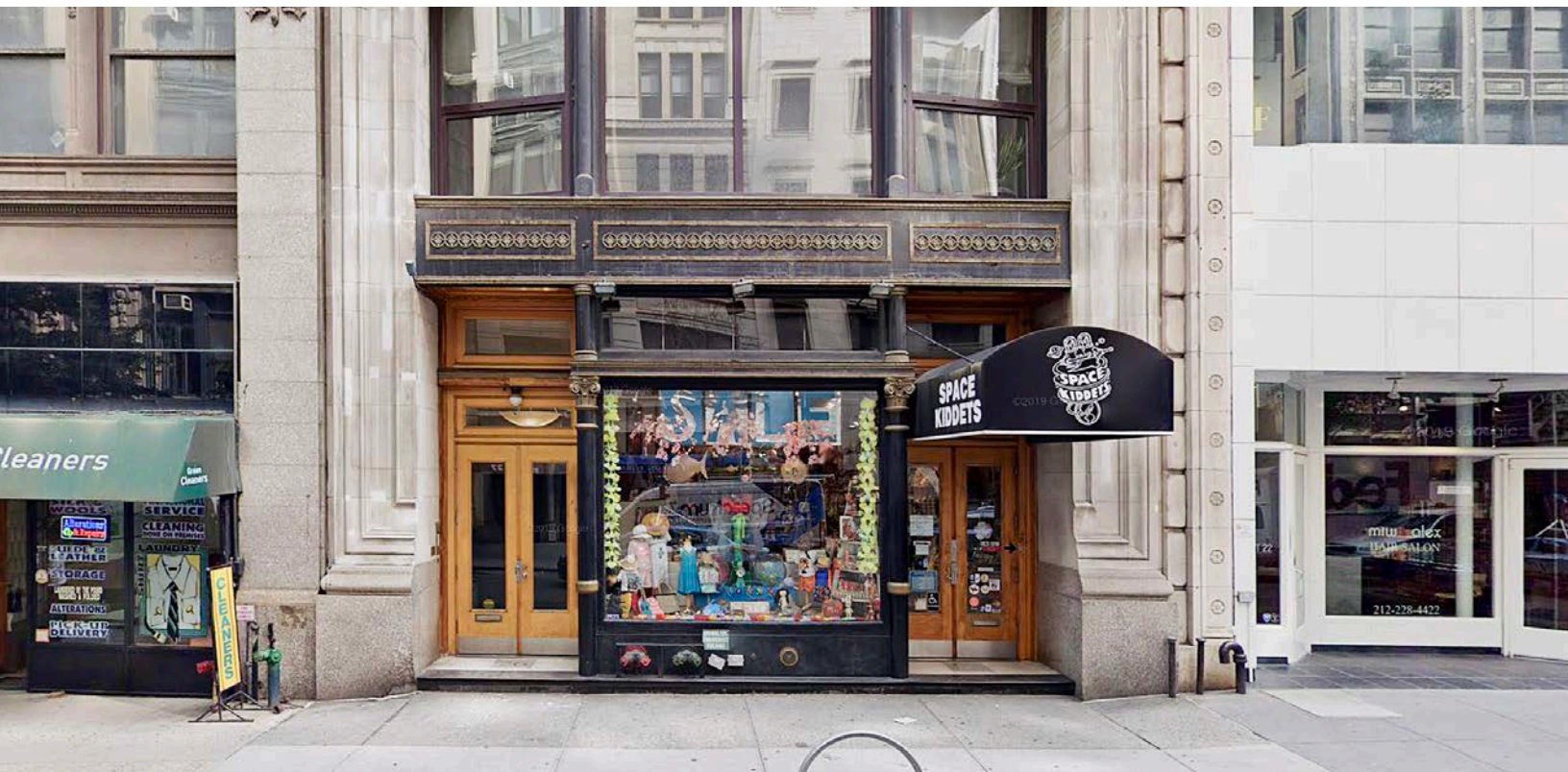


TWENTYSIX

EAST 22ND STREET

Between Broadway & Park Ave. South

 **SINVIN**
COMMERCIAL REAL ESTATE & ADVISORY



DETAILS :

Ground Level
2,400 Square Feet

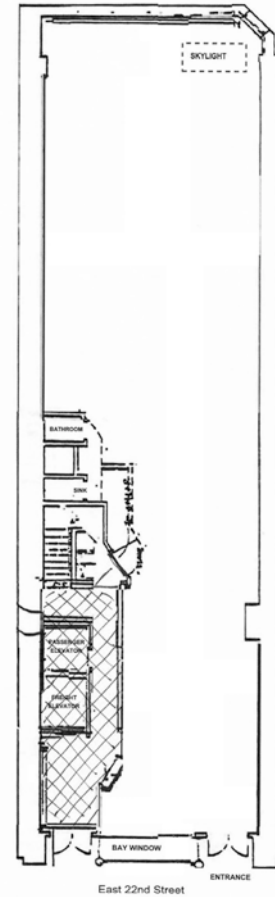
Lower Level Storage
400 Square Feet

Frontage
18'

Ceiling Height
14' 2"

Possession
Immediate

Asking Rent
Please Inquire



CONTACT :

Christopher Owles
212.604.9002
chris@sinvin.com

Sarah Shannon
646.673.8780
sarah@sinvin.com

 **SINVIN**
COMMERCIAL REAL ESTATE & ADVISORY

NOTES :

- Convenient location steps from Madison Square Park, Union Square, Gramercy Park, and The Flatiron Building
- Tree-lined block with strong foot traffic
- 1/2 a block away from the 6 and R,W subway lines; 1.5 blocks away from the F,M line
- Canopy entrance offers great branding potential
- Significant visibility through large display window
- Skylight in rear of space
- Dry uses preferred; no restaurants

NEIGHBORS INCLUDE :

- Farrow & Ball
- Almond Restaurant
- NY Kids Club
- Eataly
- Flatiron Pediatrics
- Harry Potter NY
- Fotografiska